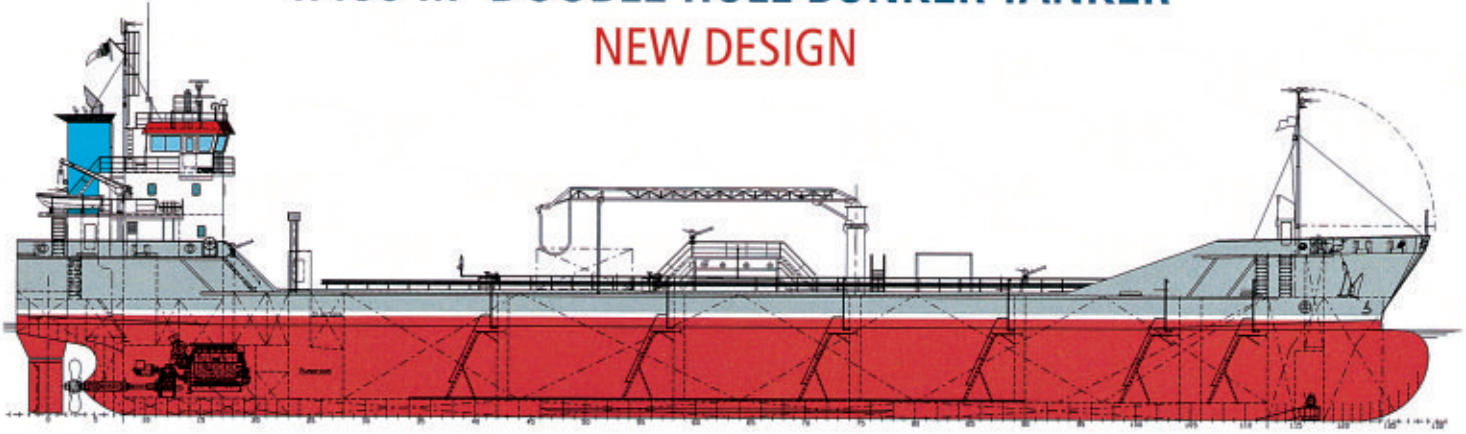


4.400 M³ DOUBLE HULL BUNKER TANKER

NEW DESIGN



CHARACTERISTICS

Compact double hull tanker with an attractive speed and equipped with a cargo hose handling crane. This bunker tanker has 10 heated fuel oil tanks with a capacity of 4240 m³ including the slop tank with a capacity of 90 m³. The two cargo fresh water tanks have a capacity of 245 m³. The three channel bow thruster is suitable as a *get me home* device.

MAIN PRINCIPALS

Length over all	89.95 m
Length between p.p.	84.94 m
Beam moulded	14.40 m
Depth	7.85 m
Draught design	5.80 m
Deadweight design	4300 tdw
Draught max	6.25 m
Deadweight max	4.800 tdw
Tonnage	2.999 GT
Service speed design	12 kts

MAIN PROPULSION EQUIPMENT

Engine	MaK 6M25, 1980 kW MCR at 750 rpm.
Consumption	HFO 380, including 100 kW consumption for shaftgenerator and under normal conditions: 7.6 t/24 h at 12 kts speed.

SPEED CHARACTERISTICS

Running 90% MCR under normal service conditions.	
Service speed on 5.80 m draught	12 kts
Service speed on 3.00 m draught	13 kts

CLASS REGULATIONS

LR #100A1 Double Hull Oil Tanker, ESP, #LMC, UMS,
Carrying petroleum products at or above 60° Celsius.
Dutch Shipping Inspectorate or equal

CARGO TANK CAPACITIES

Total capacity fresh water tanks	245 m ³
Total capacity heated HFO/MDO tanks	4.240 m ³

LOADING & DISCHARGE CAPACITIES

Cargo SG up to	1.025 t/m ³
Cargo viscosity	500 cSt
Discharge rate fuel oil	2 x 480 m ³ /h
	1 x 100 m ³ /h
Discharge rate fresh water	100 m ³ /h
Loading rate	960 m ³ /h

ADDITIONAL EQUIPMENT

Shaftgenerator	312 kW
Auxiliary diesel set	2 x 350 kW
Emergency diesel set	1 x 80 kW
Bowthruster, suitable as <i>get me home</i> device	250 kW
Propellor	CPP
Rudder	Flap type
Cargo hose handling crane	995 kg at 20 m outreach

TANKCAPACITIES

Waterballast	1.950 m ³
HFO 380	232 m ³
Fresh water	50 m ³

All details believed to be correct and subject to reconfirmation

Shipyard



CHOWGULE & COMPANY PVT LTD SHIPBUILDING DIVISION

Near Borim Bridge, Loutulim - 403 718, Goa - India
T (+91-832) 277 7010 / 343, F (+91-832) 285 8058
cclsbd@sancharnet.in, chowsbd@sancharnet.in
www.chowgule.co.in/cclsbd/index.html

European contact



JR Ship Brokers
& Consultants BV
P.O. Box 3, 8860 AA Harlingen, The Netherlands
T +31(0)517 431 786, F +31(0)517 431 765
management@jrshipbrokers.com, www.jrshipbrokers.com